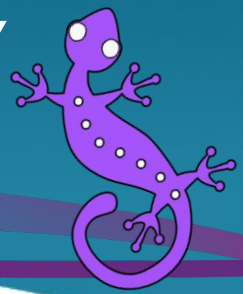


# SALEM ELEMENTARY

BUILD RELATIONSHIPS ENGAGE EVERY STUDENT RIGOR FOR ALL



## 2017-2018 DATA

- **Met** student academic growth expectations overall.
- **Met** student growth expectations in reading.
- **Exceeded** student growth expectations in math.
- **All** measured subgroups met student academic growth expectations, including Academically or Intellectually Gifted (AIG), Asian, black, economically disadvantaged, English learners, Hispanic, students with disabilities (SWD), and white.
- **Exceeded** NC long-term goal for English learner progress by over 13%.
- **62%** of teachers in grades 3-5 were recognized for being in the top 25% of teachers in the district and/or state based on student growth in reading and/or math.
- **6** National Certified Board Teachers . . . **5** more looking to start the process next year.
- All teachers are certified and highly qualified.
- NC Teacher Working Conditions Survey 2018 provides a sense of the school culture: <https://ncteachingconditions.org/results/report/628/176493>.

## PANORAMA FAMILY SURVEY RESULTS

- 97% of families responded that Salem communicates well with people from their culture.
- 95% of families responded that Salem is welcoming to parents.
- 94% of families responded that the children at Salem respect the staff.
- 90% of families responded that the teachers at Salem respect the children.
- 90% of families responded that Salem provides appropriate information about family involvement opportunities.
- 87% of families responded that administrators at Salem create a school environment that helps children learn.

## ENRICHMENT

- Small class sizes (no class over 22 in 2019-2020)
- Gifted (AIG) services **above** district requirements
- Small-group differentiated instruction for all
- Technology integration (3:1 ratio for Chromebooks plus other devices)
- “Teach-In” initiative brings in family and community members to share expertise
- Computer coding throughout year



## FAMILY AND COMMUNITY ENGAGEMENT

- Strong collaboration with Parent Teacher Association (PTA)
- Annual S.T.E.A.M. Night (science, technology, engineering, the arts, and math)
- Fall and spring movie nights at the school
- Kindergarten playdate prior to start of school year
- Salem Spirit nights at a local restaurants and entertainment venues
- Salem Singers and Salem Players performance at local retirement community
- Spring Festival
- Book Fairs
- Family Engagement Nights (collaborating with parents so that they can better support their children at home)
- And more ...

## FOCUS ON CHARACTER AND EQUITY

- Staff Equity Team
- Student Voice Team (focused on equity issues)
- Anti-bias counseling lessons
- Peaceful School Bus initiative
- Student Leaders
- Recognized as “Model School” for PBIS
- Third-Grade Cultural Expo

## EXTRA-CURRICULAR ACTIVITIES

- Salem Singers (chorus)
- Salem Players (instruments)
- Salem Musical
- Art Club
- Salamanders on the Run (family run club)
- Morning News Team
- First in Fitness
- Chess Club (paid)
- Mad Science (paid)
- Book Clubs
- Media Helpers